

Research Management System

Markus Kirchberg, Klaus-Dieter Schewe

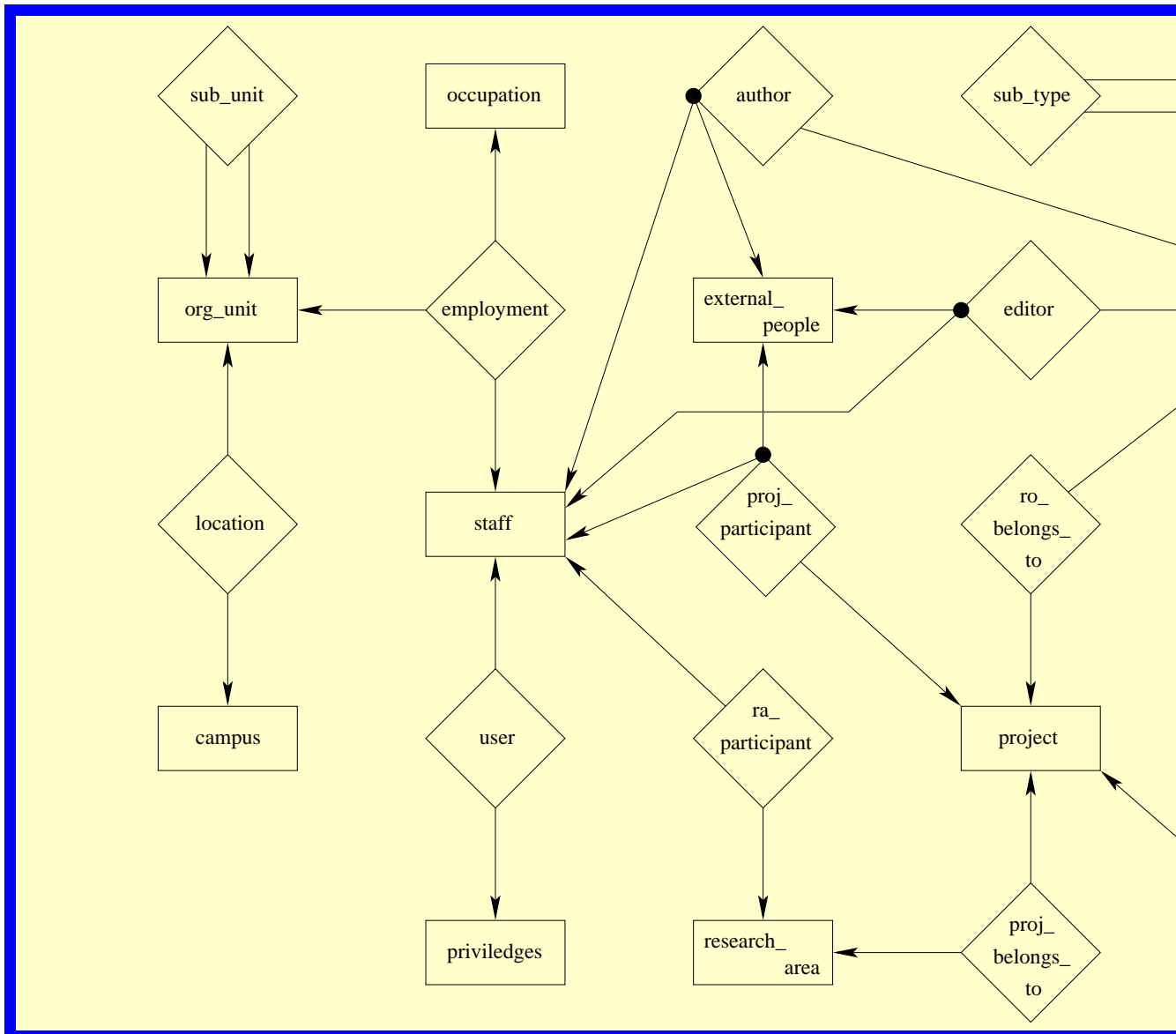
Part I. System Overview

Part II. System Demonstration

Goals of the Research Management

- provide a database for research projects, funds, research staff,
- information should be up to date, i.e., actual research & results
- generate web presentations from the database: research project lists, search / query facilities, downloadable articles
- flexible support for departments, colleges, the whole university
- generate literature listing (bibtex, endnote)
- run audits as normal database transactions

Database Schema



Some Attributes (in the Relational S

PROJECT:	id, title, budget, begin, end
RESEARCH_AREA:	name, abbr, begin, end
RESEARCH_TYPE:	name, supertype, id, bibtex_ty
FUND:	id, name, kind, description
AUTHOR:	id, staff_id, ext_id, ro_id, numb
PROJ_PARTICIPANT:	id, staff_id, ext_id, leader, proje
RESEARCH_OUTPUT:	id, title, rt_name, abstract, ann chapter, edition, howpublished note, number, pages, publisher volume, year

System Functionality I/II

(i) Java-based front-end to insert, update & delete data (→ Pass

- Distinguish three user groups: Superuser, advanced user &

Menu	Superuser	Advanced User	Ge
Organization Mgmt	s/i/u	s/i/u	
Staff Mgmt	s/i/u	s/i/u	
User Mgmt	s/i/u/d	-	
Research Area Mgmt	s/i/u	s/i/u	
Project Mgmt	s/i/u	s/i/u	
Research Output Mgmt	s/i/u	s/i/u	

- All 19 research types defined by Massey are supported (→
- Some features: Up-to-date, transaction support, file upload

System Functionality II/II

(ii) Web-based front-end to retrieve/query data (→ Public access)

(a) Automatic creation of web pages based on DB contents.

- E.g., list staff members, projects, research areas or research organization unit or for a given staff member.

(b) Search facility to query DB.

- Provides possibility to limit a search.
- **Both:** Research output listings are available in plain text (HTML will be supported later too).

(c) Report facilities for RMS superusers.